

Behind Barred Doors
 The Clyde Vanterpool Case Study

**Texas Penal Code Chapter 20A.02(7):
 Trafficking of Persons**

A person commits an offense if the person knowingly traffics a child and by any means causes the trafficked child to engage in, or become the victim of, conduct prohibited by:

- 21.02: Continuous Sexual Abuse of Young Child or Children;
- 21.11: Indecency with a Child;
- 22.011: Sexual Assault of a Child;
- 22.021: Aggravated Sexual Assault of a Child;
- 43.02: Prostitution (also, Promotion, Online Promotion, Compelling);
- 43.25: Sexual Performance by a Child;
- 43.251: Employment Harmful to Children; or
- 43.26: Possession or Promotion of Child Pornography.

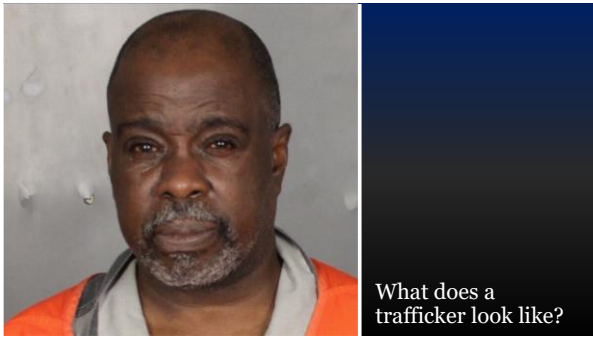
**Texas Penal Code Chapter 20A.01(1), (4):
 Definitions**

In this chapter:

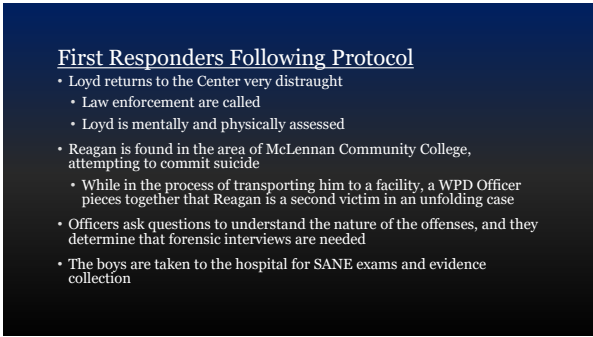
(1) "Child" means a person younger than 18 years of age.

...

(4) "Traffic" means to transport, entice, recruit, harbor, provide, or otherwise obtain another person by any means.



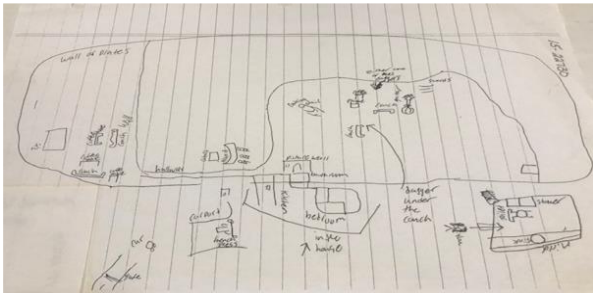




Forensic Interviews and Follow-Up Discoveries

Incredible Memories

- Incredible Memories
- Why use forensic interviews?
 - What do I do when my victims are transient and have left the area?
 - What are my victims saying?
 - Does it make sense with the evidence collected thus far?
 - Does the information provided offer new avenues of investigation?
 - Are there follow-up questions that should be asked based upon new details learned?
 - Who should ask these follow-up questions? It depends.



Loyd's Diagram of Vanterpool's House



Reagan's Diagram of Vanterpool's House



The Investigation and an Evolving Charge
Building a Trafficking Case



Corroborating Evidence Pt. 1



The House on Hawthorne Dr.



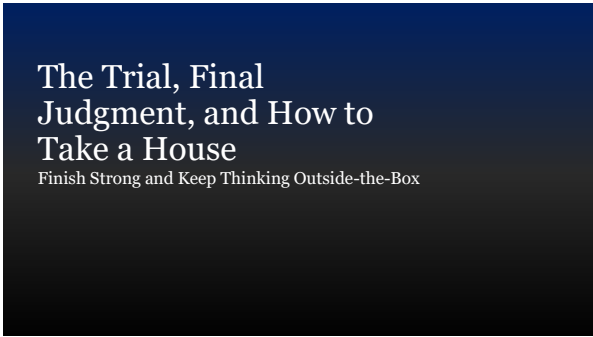
Corroborating Evidence Pt. 2

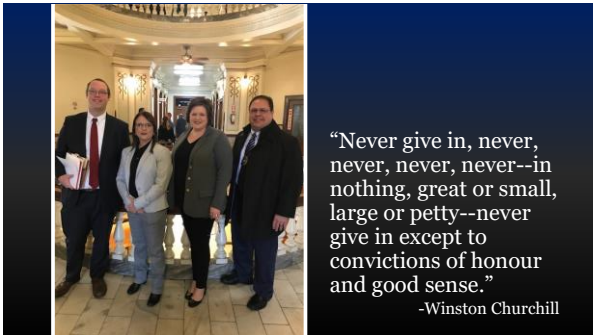


The Interview
Deflections and "Soft Confessions"









Contact Information

- Kimberly Clark
kclark212@yahoo.com
(254) 715-5518 (cell)
- Christi Hunting Horse
christi.huntinghorse@co.mclennan.tx.us
(254) 757-5084 (office)
