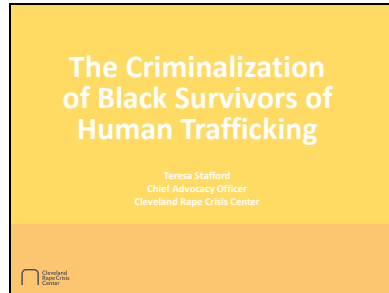


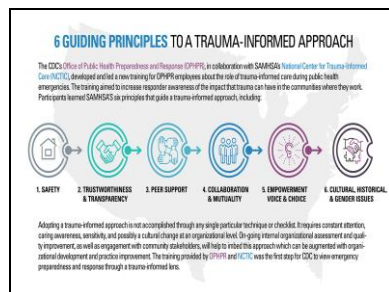
Slide 1



Slide 2



Slide 3



Slide 4

Sex Trafficking and Girls of Color

- Black girls are more likely to be trafficked at a younger age
- 40% of sex trafficking victims were identified as Black women

Rights 4 Girls, Urban Institute



Slide 5



Polling Question:

Does your agency, CAC, MDT incorporate all 6-keys principals of a trauma informed approach when responding to sex trafficking?



Slide 6

Systemic Racism and Sex Trafficking



Slide 7

Barriers to Disclosure and Identification



- Self blame
- Fear of not being believed
- Internalized oppression
- Intersection of race and gender
- Historical and transgenerational trauma
- Stigmatization of African American/black female sexuality
- Need for more training
- Adulterization of girls of color
- Lack of diversity in programs and systems
- Lack of cultural humility
- Systemic racism



Oswald Davis
Child Center

Slide 8

[illegible]

Slide 9

The infographic consists of a central grid of six yellow boxes, each containing a statement. The boxes are arranged in three rows and two columns. The statements are:

- Black girls seem older than white girls of the same age.
- Black girls need less nurturing than white girls.
- Black girls need less protection than white girls.
- Black girls need to be supported less than white girls.
- Black girls need to be comforted less than white girls.
- Black girls are more independent than white girls.

Below the grid, there are two more yellow boxes, each containing a statement:

- Black girls know more about adult topics than white girls.
- Black girls know more about sex than white girls.


At the bottom left, there is a logo for the "Overlaid Paper Girls Center" and a small graphic of a girl's silhouette. At the bottom right, there is a list of social media links and a copyright notice.

Slide 10

Even the traffickers know...

In an interview with the Urban Institute, traffickers admittedly believe trafficking Black women would land them less jail time than trafficking White women if caught.


Rights 4 Girls, Urban Institute



Slide 11

Intersectionality of Sexual Trafficking

Race/Ethnicity	Poly-victimization	Gender	Mental Health
Religion	Substance Abuse	Sexual Orientation	Geographical Location
Criminal History	Socio-economic Status	Differing Abilities	Immigration Status



Slide 12

What Makes Girls of Color Vulnerable to Trafficking?

- A history of sexual and/or physical abuse
- Community or family instability and dislocation
- Child welfare involvement, especially out-of-home foster care placement
- Being a runaway or homeless youth
- Disconnection from the education system and being off-track for achievement
- Poverty



Slide 13

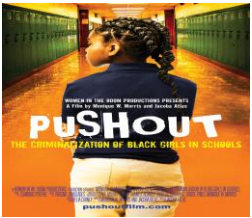
Sex Trafficking and Socioeconomic Status

- Black girls are more likely to experience poverty than their racial counterparts.
- False promises of wealth
- Due to unemployment, debt, and need to provide for themselves and their children, many victims are less likely to leave the situation to make ends meet.

University of Maryland System

Slide 14

Sex Trafficking and Educational Institutions



University of Maryland System

Slide 15

Sex Trafficking and the Criminal Justice System

Often called

'DIFFICULT'

University of Maryland System

Slide 16

Criminal Justice System

- Safe Harbor and specialized human trafficking dockets
- According to the FBI, 57.5% of all juvenile prostitution arrests are Black children.
- Treated as criminals instead of victims/survivors

Chrystal Kiser, charged with killing her suspected sex trafficker, released from jail after \$500,000 bail

Free Cyntoia

Overland Park Crisis Center

Slide 17

THE SEXUAL ABUSE TO PRISON PIPELINE: THE GIRLS' STORY

GIRLS IN THE JUVENILE JUSTICE SYSTEM

31% HAVE BEEN SEXUALLY ABUSED

GIRLS OF COLOR ACCOUNT FOR APPROXIMATELY 70% OF THE GENERAL YOUTH POPULATION, BUT COMPOSE APPROXIMATELY 80% OF GIRLS WHO ARE INCARCERATED.

Overland Park Crisis Center

Slide 18

Sex Trafficking and Gangs

- Emotional need
- Physical and sexual abuse
- Low self esteem
- Drug abuse
- Unsafe schools
- Dangerous neighborhoods
- Family is distressed

Child Sex trafficking

Effects of child maltreatment

Joining a gang

Overland Park Crisis Center

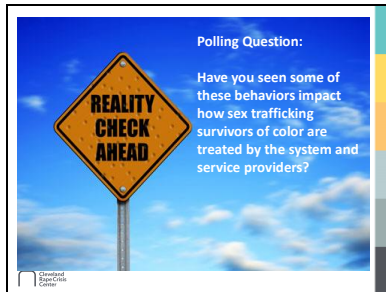
Slide 19

Sex trafficking and Hispanic Survivors

- Often fleeing violence and poverty
- Lured with fraudulent job offers or abducted on the journey to the U.S.
- May be sold to traffickers or into forced marriages in the U.S. by family members
- Most common access points are U.S. immigration officials and the Office of Refugee Resettlement



Slide 20



Slide 21

Changing the Narrative...



Slide 22



Slide 23

Macroaggressions

- Macroaggressions occur at a structural level encompassing actions that are meant to exclude, either by action or omission.
 - Example:

The "Oswald Open Cris Center" logo is in the bottom left corner.

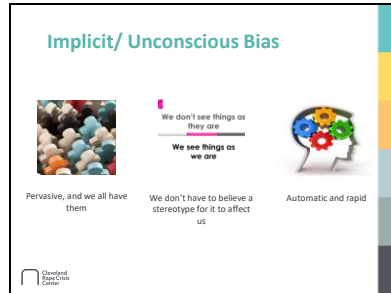
Slide 24

Recognize there is a problem!

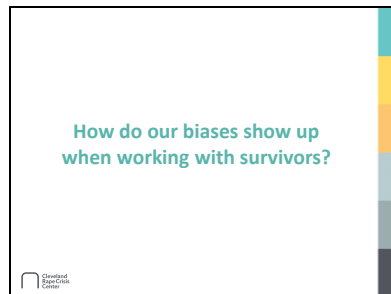
The chalkboard graphic shows the word "Problem" on the left, followed by a right-pointing arrow, a lightbulb icon in the center, another right-pointing arrow, and the word "Solution" on the right.

The "Oswald Open Cris Center" logo is in the bottom left corner.

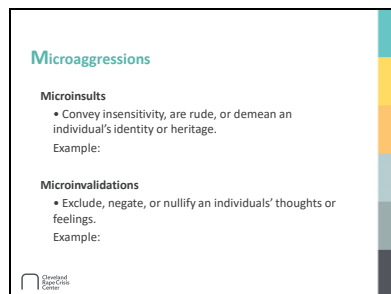
Slide 25



Slide 26



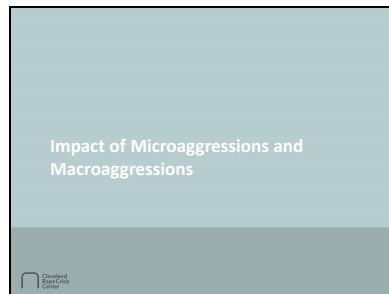
Slide 27



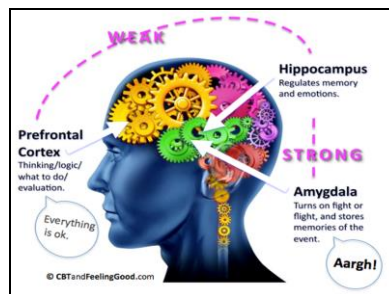
Slide 28



Slide 29



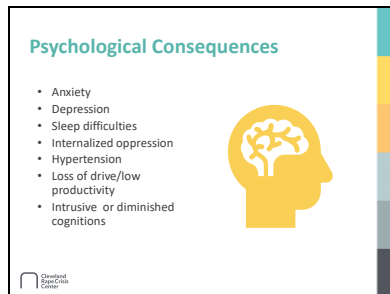
Slide 30



Slide 31



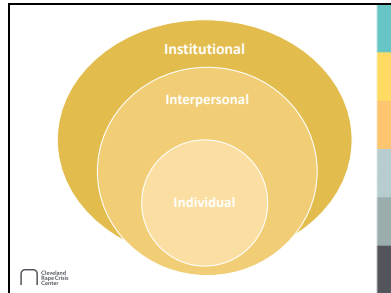
Slide 32



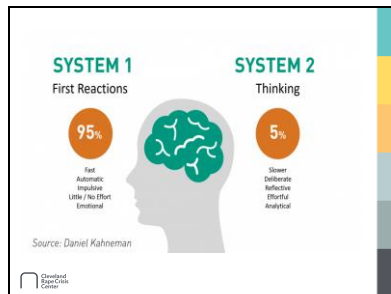
Slide 33



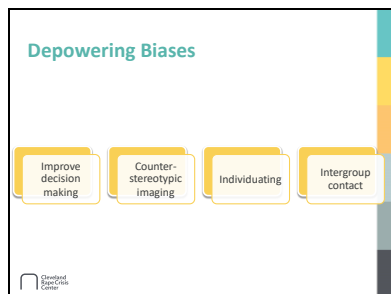
Slide 34



Slide 35



Slide 36



Slide 37



Slide 38




Slide 39



Slide 40

Macro Recommendations


- Advocacy Agencies
 - Hire diverse staff
 - Operate from a model of empowerment vs a maternalistic model
 - Void the savior mentality
 - Examine the use of evidence-based programming
 - Explore using peer support models

 University of Maryland System

Slide 41

Macro-Recommendations


- Active Case Reviews with MDT
- Cultural Needs Assessment
- Multicultural Representation
- Advocate for criminal justice reform
- Offer choice through empowerment
- Replace zero-tolerance in schools with restorative justice policies
- Provide more services to girls of color in the foster care system
- Equity Primes

 University of Maryland System

Slide 42

Equity Primes

- Where are the decision-making points that affect outcomes?
- What decisions/actions may be reinforcing the status quo, implicit bias and current inequities?
- What alternative action options could produce different outcomes?
- Which action will best advance equity and inclusion?
- What reminders, supports and accountability systems can be structured into routine practices to keep equity as a high priority?

 University of Maryland System

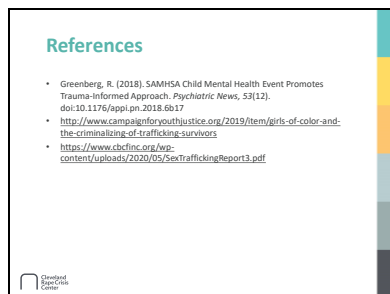
Slide 43



Slide 44



Slide 45



Slide 46

